

[www.bitunamel.de](http://www.bitunamel.de)



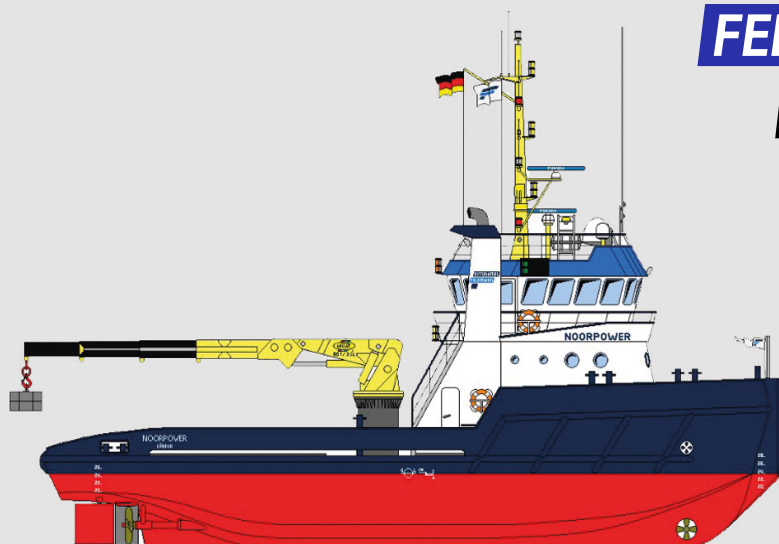
**BITUNAMEL**

**FELDMANN**



**Multi-purpose Tug**

**NOORPOWER**



**TECHNICAL SPECIFICATION**

**Classification / Flag:**

Flag / homeport	German/Lübeck
Year of built	2001
Classification	Lloyd's Register 100A1 HULL MACH TUG LMG Unrestricted
Class valid up to	2026
Call sign	DKSL2
IMO number	9229544
MMSI number	244153000

**Dimensions:**

Length O.A.	25,80 meters
Beam / width	7,60 meters
Depth at sides	3,10 meters
Draft (min. – max.)	2,30 – 2.75 meters
Air draft	14,0 meters (with 2,4m draft)
Air draft (with mast lowered)	10,0 meters (with 2,4m draft)
Gross tonnage	167 GT
Net tonnage	50 NT
Deck cargo cap.	2x 1 TEU
Clear deck area	55 m <sup>2</sup>
Cargo deck load	2 tons per m <sup>2</sup>

**Tank capacities / Transfer:**

Fuel oil / gasoil	76.400 liters
Fresh water	39.900 liters
Transfer of fuel oil	15 m <sup>3</sup> /hr
Transfer of fresh water	10 m <sup>3</sup> /hr

**Navigation & Radio:**

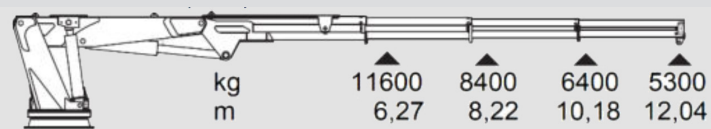
V-Sat, GSM, GMDSS A1-A2, Radar, EPIRB, SSB, Speed log, Inmarsat C, GPS, AIS, Echo sounder, Autopilot, 2x Compass, Navtex & VHF

**Machinery / Performances:**

Bollard pull	23,2 tons
Max speed	10,0 knots
Main engines	2x Deutz TBD616V12
Total output	1.374 kW = 1.870 BHP
Propulsion	Twin fixed propellers in nozzles
Diameter propellers	1,60 meters
Bow thruster	90 kW / 120 BHP
Generator sets	3x Deutz
Generator power	2x 122 kW – 1x 23,7 kW
Hydraulic powerpack	2 Hydraulic pumps EATON 70533-LAB 250 Bar 1500 rpm

**Deck Equipment:**

Winch	Single drum Hagglands
Pull force	220 kN
Holding force	90 kN/m (band brake)
Tow wire	600 meters
Tow wire diameter	38 millimeters
Towing pins	Yes
Push bow	Rubber Fender
Stern roller	3,30 meters x 0,55 meters
Main marine deck crane	HEILA HLRM 80-3S
Maximum lift capacity	5.3 tons @ 12.04 meters



**Accommodation:**

Facilities Airconditioned, 7 berths