

[www.bitunamel.de](http://www.bitunamel.de)



**BITUNAMEL**

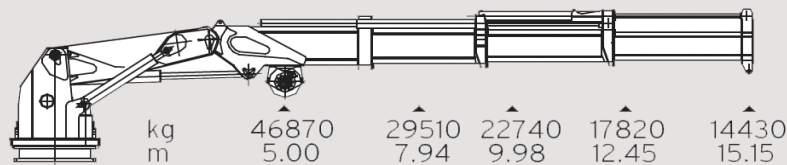
**FELDMANN**

**Multi-purpose Tug**  
**NOORMAN**

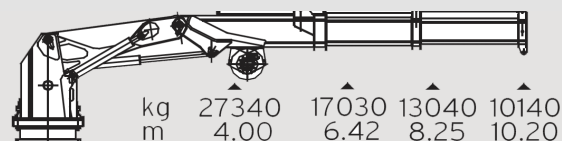
**TECHNICAL SPECIFICATION**

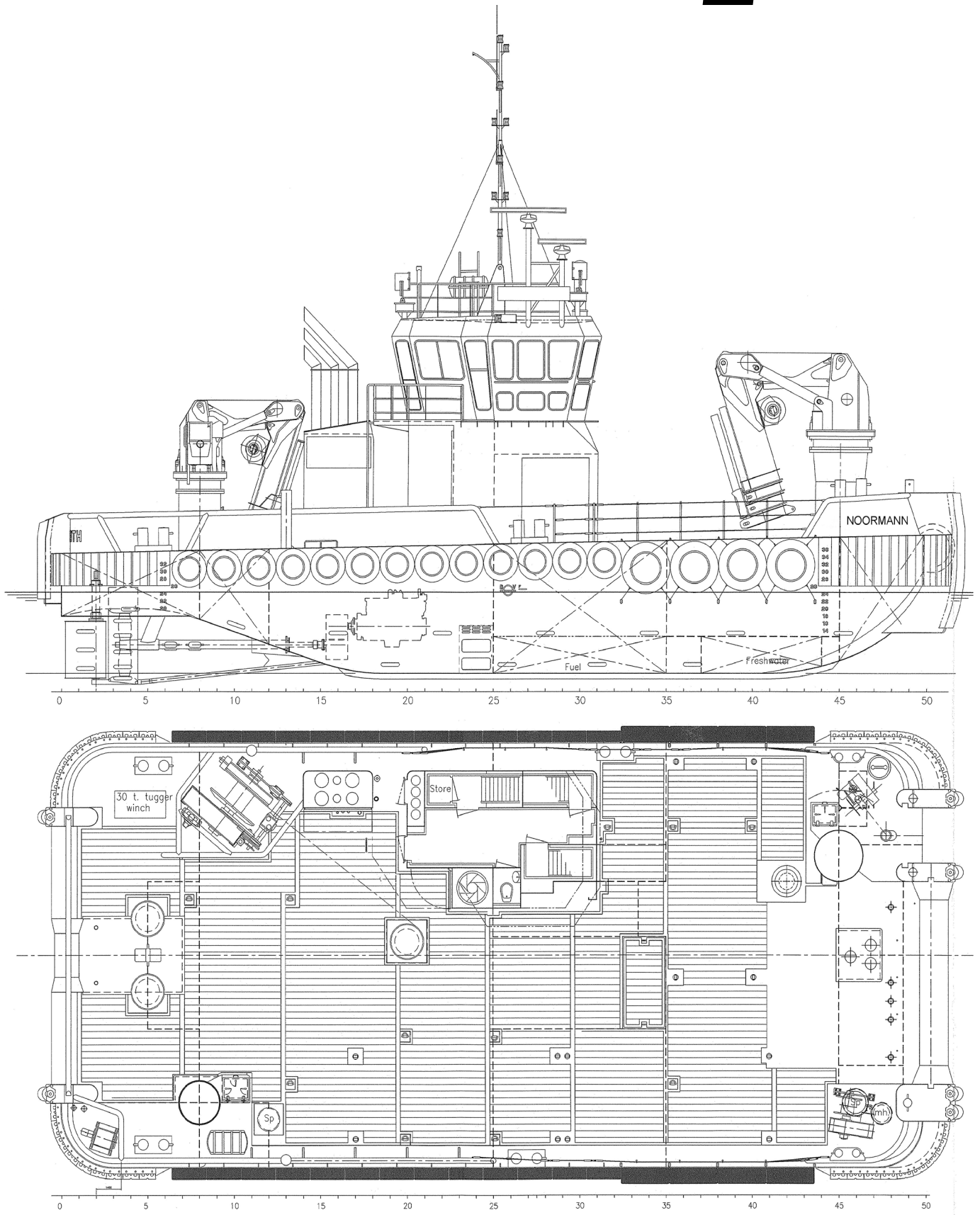
<b>Build</b>	2008	<b>Propulsion</b>	3 x Caterpillar 3412 DDITA 2.550 bhp @ 1.800 rpm 3 x Ice strengthened FPP in nozzles
<b>Type Registered</b>	Damen Multicat 2611 Lübeck	<b>Bow Thruster</b>	Van Tien, 360 °, 270hp
<b>Classification</b>	BV Unrestricted navigation	<b>Auxiliary</b>	1 x Caterpillar C-19 hydraulik power-pack 2 x Caterpillar C-4.4, 2 x 110 KvA, 400 V
<b>GRT</b>	255t	<b>Speed</b>	10 kn
<b>Dimensions</b>	LOA: 26,00m Beam: 11,50 Draft: 2,30m - 2,70m	<b>Bollardpull</b>	34 to
<b>Deck Equipment</b>	AH towing winch, 50 t, 600 m / 40 mm wire Towing winch, 20 t, 400 m / 28 mm wire Tugger / anchor winch, 6 t, 28 mm, 400 m wire Tugger / anchor winch 6t, 350m / 20mm wire 2 coupling / anchor winches, 15 t, 28 mm wire forward crane, HS-Marine, 46,8 to @ 5,00 m, 14,4 to @ 15,00 m aft crane, HS-Marine, 27,3 to @ 4,00 m, 10,4 to @ 10,20 m Towing pins, 50 to Chain and Wire catcher Bow- and stern roller 50 to	<b>Transfer pumps</b>	Fuel supply 50 cbm / hr. Fresh water supply 50 cbm / hr.
<b>Mooring</b>	2 Supd Legs, 15m 3 point anchor mooring	<b>Bridge and Communication</b>	According GMDSS „A2“ 3 VHF Navtex 2 Radar GPS AIS Autopilot Echosounder Magnet compass Satellite compass 2 Searchlights GSM phone 2 LED Searchlight

**AKC 325 HE3**



**AKC 145 HE2**





[www.bitunamel.de](http://www.bitunamel.de)



**BITUNAMEL**

**FELDMANN**

CONTACT DETAILS

**BITUNAMEL FELDMANN GMBH**

Adress: Zur Teerhofinsel 2, 23554 Lübeck  
Phone: +49 (0)451 289950  
Fax: +49 (0)451 283721  
E-Mail: [info@bitunamel.de](mailto:info@bitunamel.de)  
Web: [www.bitunamel.de](http://www.bitunamel.de)